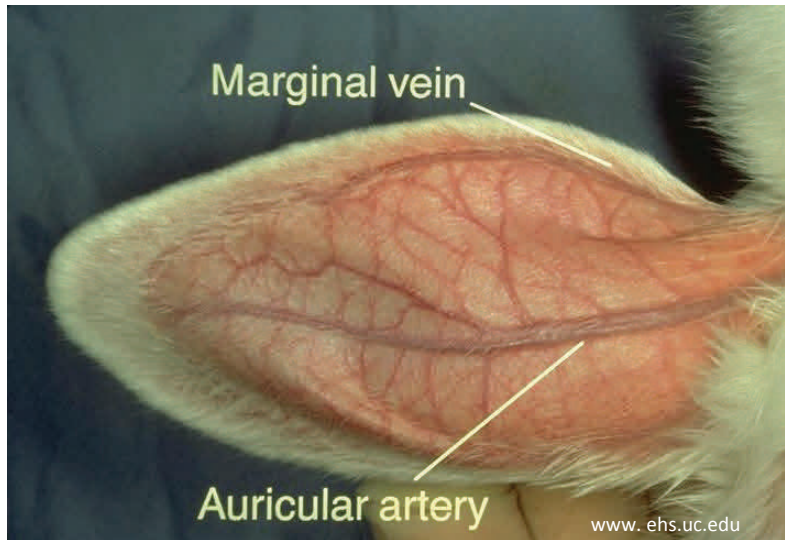


Intravenous (IV) Injections - Rabbit



IV injections are straightforward in rabbits because of the ease of vascular access. The marginal ear veins located on the lateral aspect (furred side) of the rabbit's ears are readily visible, although clipping the fur can aid in visualization. The veins can be made more prominent by occluding the vessels at the base of the ear by gently holding them off with your fingers. The skin over the vein is swabbed with an alcohol soaked cotton pad. The needle is inserted by directing it into the vein with its bevel facing upward at an angle of approximately 20 degrees. Insert the needle slowly. Visualize the needle as it enters the vessel. Once the vessel wall has been penetrated, decrease the needle's angle and insert approximately another 2mm. Remember to aspirate to verify placement of the needle within the vein. Remove your occluding fingers prior to injection. During material administration, the vein should blanch as fluid runs through it, and no material or swelling should be detectable at the injection site—this indicates injection outside of the vessel. Materials should be administered slowly to avoid vascular overload or rupture of the vein from excessive pressure. After injection, pressure should be applied over the injection site by gently holding a piece of gauze over the site for approximately 1 minute to prevent hematoma formation. A butterfly needle or a catheter may be inserted if larger volumes are to be administered or repetitive doses will be given.